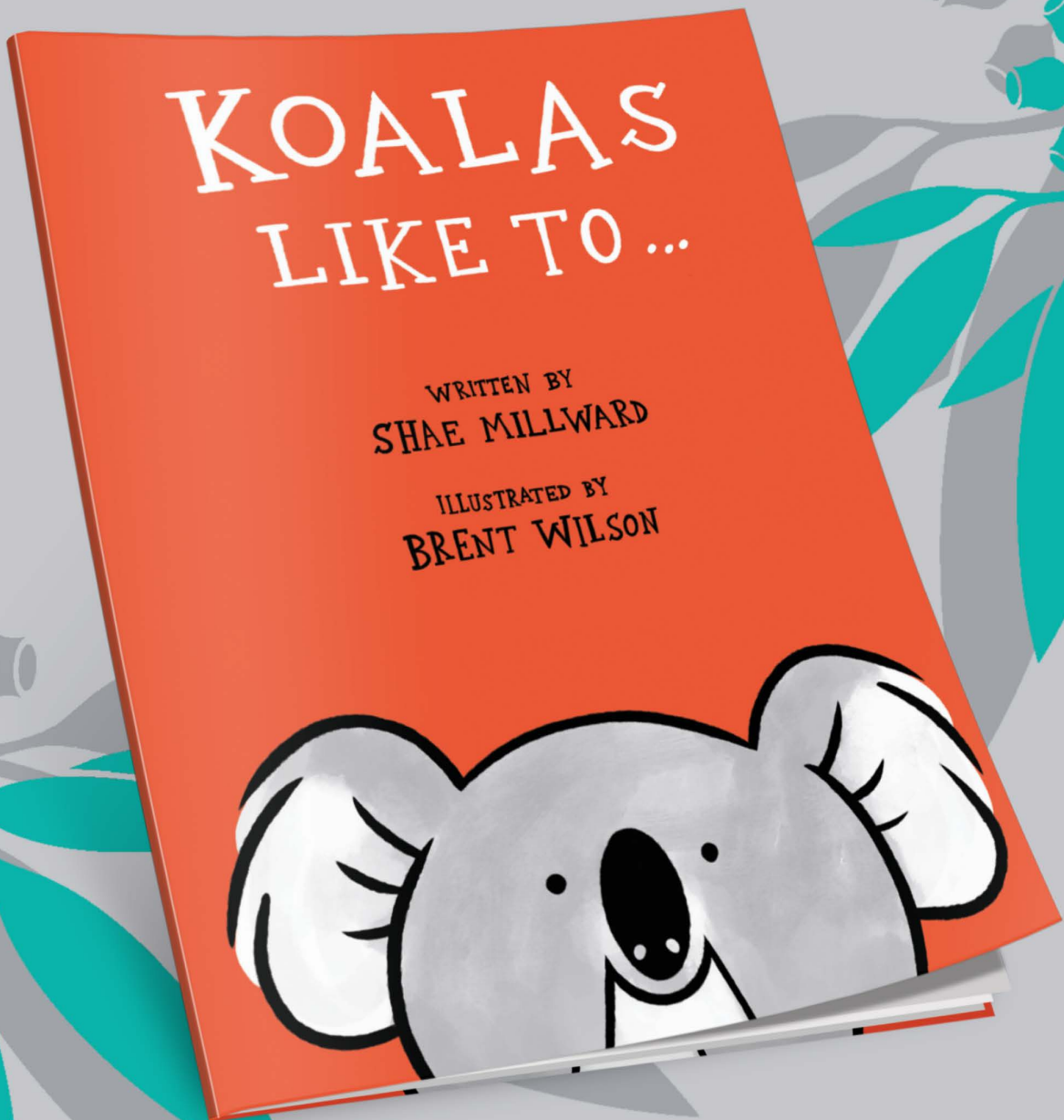




TAKE HOME ACTIVITY PACK



Ipswich Koala Protection Society

An Ipswich Libraries First 5 Forever initiative supported by Ipswich Koala Protection Society.

Tales AND TRAILS



ABOUT TALES AND TRAILS

Follow the Trail, Read a Tale, Have an Adventure!

Enjoy reading outdoors with your family.

Look for the numbered signs as you follow the path around your local park.

Run your fingers along the signs to discover the touch reading technique of Braille.

This trail features *Koalas Like To...* written by Shae Millward and illustrated by Brent Wilson. Discover and learn about Queensland's faunal emblem, the koala.

Tales and Trails is proudly supported by Ipswich City Council.

Visit the Queens Park Environmental Education Centre or any branch of Ipswich Libraries to collect your Nature Play Passport and Take Home Activity Pack.



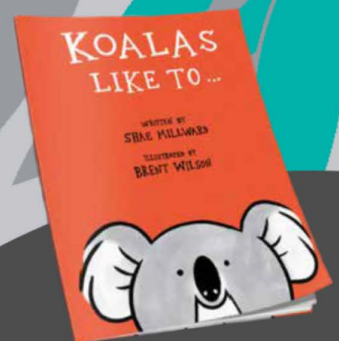
LISTEN



WATCH



READ



ABOUT STORIES FOR LITTLE QUEENSLANDERS

State Library of Queensland has published 12 children's picture books for Queensland's littlest readers as part of First 5 Forever. Produced exclusively for State Library of Queensland and First 5 Forever, this series reflects the diversity of Queensland, celebrates the uniqueness of our state, and aims to inspire a love of reading and discovery in a new generation of little Queenslanders. The books also showcase writers and artists with a Queensland connection who are based throughout the state.



ABOUT FIRST 5 FOREVER

In the first five years, little moments make a big difference. Children learn best from those closest to them – and by talking, reading, singing and playing together every day, families support their child's brain development and help them build a lifelong love of learning and discovery.



KOALA FACT FILE

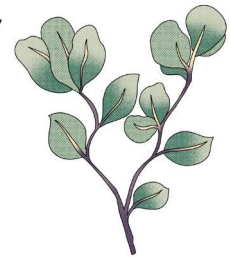
Koalas are one of Australia's most iconic animals. They are nocturnal marsupials who sleep for up to 20 hours a day.

Koalas are marsupials. A baby koala is called a joey.

Appearance and Size



Koalas measure between 60cm and 85cm and weigh around 14kg. They have large, round heads with big fluffy ears and black noses. Their fur is grey-brown and white, and they have strong clawed paws that help them grip well onto the branches and climb to tasty eucalyptus shoots.



Threats

Koala populations are declining, they are losing their homes to excessive tree clearing, drought and bush fires forcing them to spend more time on the ground where they become vulnerable to predators and cars.

Diet

Koalas are fussy animals and eat only a small selection of the 700 different eucalyptus varieties. Adult koalas eat up to 1kg of leaves in a day, and don't need to drink much water as they get most of their moisture from the leaves.





Zoom Zoom

Zoom, zoom, zoom,
We're going to the moon. x 2

If you want to take a trip,
Climb aboard my rocket ship,

Zoom, zoom, zoom,
We're going to the moon.

10...9...8...7...6...5...4...3...2...1.....
BLAST OFF!!

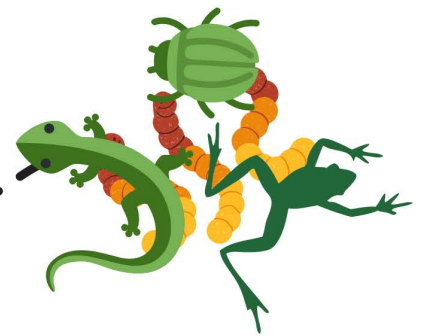


Scan the QR code to go
in the draw to win a prize
by telling us where we could
host the next Tales and Trails!



Food Australian Animals Eat

Trace the line to each Australian animal to find out the food they eat.





This Little Piggy

This little piggy went to market,
This little piggy stayed home,
This little piggy had roast beef,
This little piggy had none,
And this little piggy went
Wee, wee, wee, wee, wee
All the way home.....

*Change the market and roast beef
to your child's favourites!*



Scan the QR code
for more quick rhymes!



Colour by Numbers

Match the colours to the numbers on the koala.



PINK



GREY



BLACK